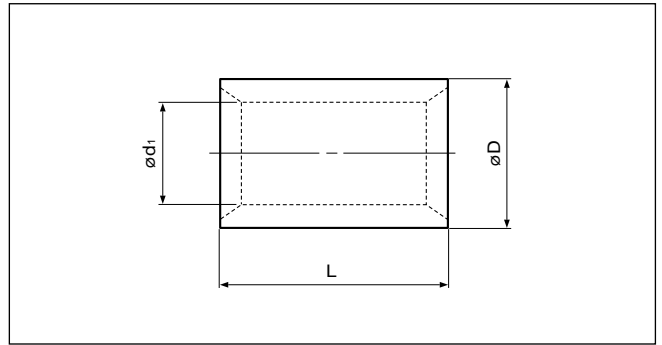


Solderless splices

**PARALLEL**

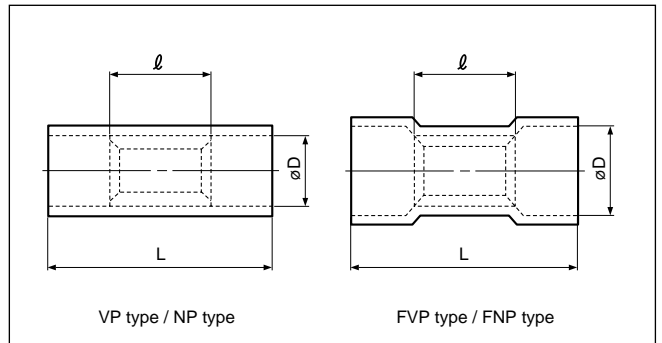
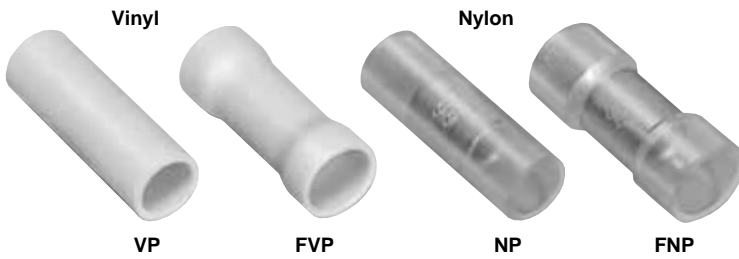


**Non-insulated**

Certificate No.: E42024 LR20812 JQ0607002

Applicable Wire AWG#(mm <sup>2</sup> )	Part No.	Standard	Dimensions mm (in.)			Tool No.										Qty/box					
			L	ø D	ø d <sub>1</sub>	YHT-2210	YHT-ØS	YA-1	YA-2	YA-4	YA-5	YPT-60N	YPT-150-1	E-4, YF-1 EP-1			E-4, YF-1				
22 to 16 (0.25 to 1.65)	P-1.25		8.0 (.315)	3.3 (.130)	1.7 (.067)	0		0	0	0										1,000	
16 to 14 (1.04 to 2.63)	P-2		8.0 (.315)	4.1 (.161)	2.3 (.091)	0		0	0	0											
12 to 10 (2.63 to 6.64)	P-5.5		8.5 (.335)	5.4 (.213)	3.4 (.134)	0		0	0	0											
8 (6.64 to 10.52)	P-8			9.5 (.374)	7.0 (.276)	4.5 (.177)		0			0	0	0	0	0	0	0	0	0	0	500
6 (10.52 to 16.78)	P-14			11.0 (.433)	8.9 (.350)	5.8 (.228)					0	0	0	0	0	0	0	0	0	0	200
4 (16.78 to 26.66)	P-22			13.5 (.531)	11.3 (.445)	7.7 (.303)					0	0	0	0	0	0	0	0	0	0	100
2 (26.66 to 42.42)	P-38			16.5 (.650)	13.2 (.520)	9.4 (.370)					0	0	0	0	0	0	0	0	0	0	
1/0 (42.42 to 60.57)	P-60			19.0 (.748)	15.3 (.602)	11.4 (.449)					0	0	0	0	0	0	0	0	0	0	
2/0 (60.57 to 76.28)	P-70			19.0 (.748)	17.5 (.689)	13.3 (.524)															50
3/0 (76.28 to 96.3)	P-80			19.5 (.768)	19.5 (.768)	14.5 (.571)															25
4/0 (96.3 to 117.2)	P-100			20.0 (.787)	22.1 (.870)	16.4 (.646)						0									
350MCM (152.05 to 192.6)	P-180			28.5(1.122)	28.5(1.122)	21.0 (.827)															20
400MCM (192.6 to 242.27)	P-200			32.0(1.260)	32.4(1.276)	24.0 (.945)															10
N.A. (250)	P-250		32.0(1.260)	35.0(1.378)	26.0(1.024)																
600 to 650MCM (242.27 to 325)	P-325		37.0(1.457)	37.0(1.457)	28.0(1.102)															0	

Note: 1) Products with the JIS mark conform to JIS C2806.  
 2) "Applicable Wires" indicates the total cross-sectional area.  
 3) Delivery lead times may vary depending on the product. Contact JST for details.



**Vinyl or Nylon insulated**

Certificate No.: E42024 LR20812

Applicable Wire AWG#(mm <sup>2</sup> )	Part No.		Standard	Dimensions mm (in.)			Color	Tool No.						Qty/box	
	Vinyl	Nylon		L	l	øD		YNT-2216	YNT-1614	YNT-1210S	YA-1	YA-2	YA-4	Vinyl	Nylon
22 to 16 *(0.25 to 1.65)	VP-1.25	NP-1.25		16.0 (.630)	8.0 (.315)	3.2 (.126)	0			0	0	0			1,000
	FVP-1.25	FNP-1.25				4.0 (.157)									
16 to 14 (1.04 to 2.63)	VP-2	NP-2		16.0 (.630)	8.0 (.315)	3.9 (.154)	0		0	0	0			1,000	
	FVP-2	FNP-2				4.5 (.177)								500	
12 to 10 (2.63 to 6.64)	VP-5.5	NP-5.5		20.5 (.807)	8.5 (.335)	5.4 (.213)			0			0		500	
	FVP-5.5	FNP-5.5				6.8 (.268)								250	

Note: 1) \*The crimping will be more secure if the total cross-sectional area of the wire is at least 0.5 mm<sup>2</sup>.  
 Examples: If the cross-sectional area of the wire is 0.3 mm<sup>2</sup>, fold the wire to two when crimping the terminal.  
 If the cross-sectional area of the wire is 0.5 mm<sup>2</sup>, crimp the terminal onto the wire as it is.  
 2) "Applicable Wires" indicates the total cross-sectional area.  
 3) Delivery lead times may vary depending on the product. Contact JST for details.

